



Poundfield Road, Loughton, IG10

BUTLER  STAG



This beautifully presented three bedroom end of terrace property is situated on a quiet residential road within easy access to Debden Station (Central Line).

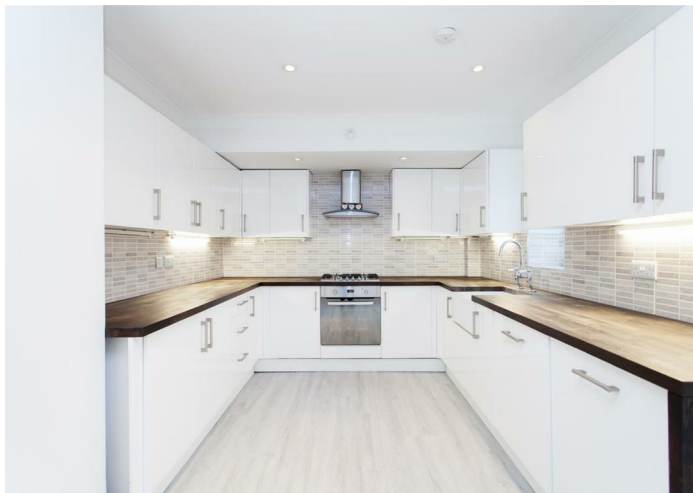


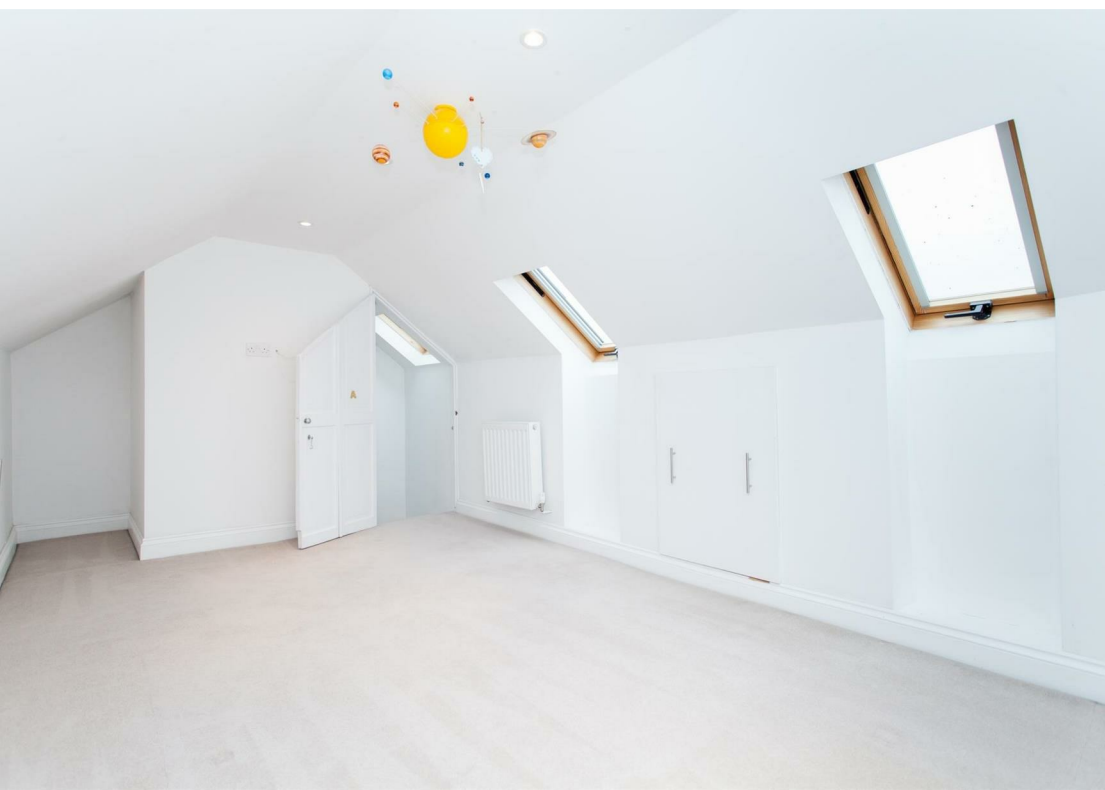
- Well Presented
- End of Terrace
- Walking Distance to Station
- Three Bedrooms
- Available June
- Modern Bathroom

The property comprises of a spacious open plan kitchen/diner, reception room, conservatory area, downstairs W/C. and private garden. The first floor has two bedrooms, family bathroom and the second floor has a third bedroom with storage.

The property is close to Debden and Loughton Central Line stations which offer easy access into London. By car M25 (junction 26), M11 (Junction 5 - Southbound) and A406 are within easy reach.

Council Tax Band - C



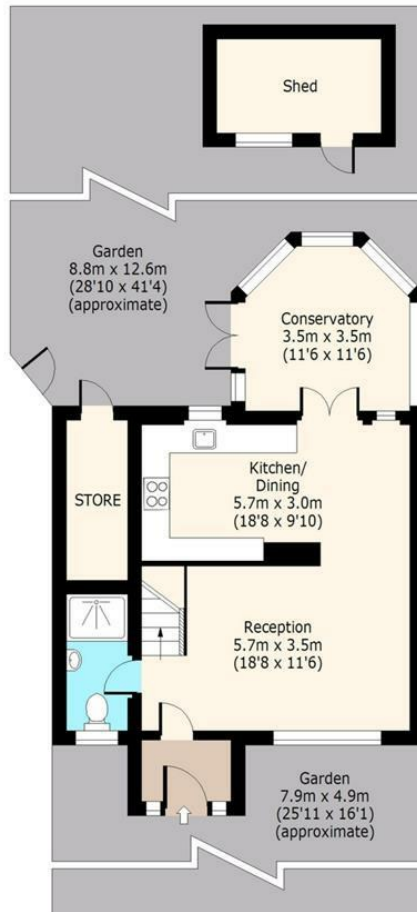


Poundfield Road, CM13



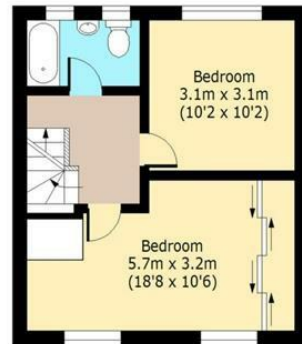
Ground Floor

Approx. 63 Sq. meters (678 Sq. feet)



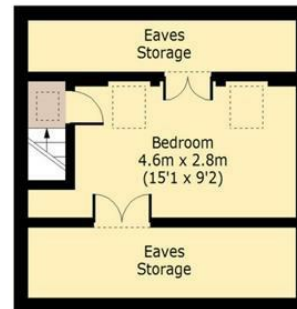
First Floor

Approx. 38 Sq. meters (409 Sq. feet)



Second Floor

Approx. 17 Sq. meters (183 Sq. feet)



Total area: approx. 118 Sq. meters (1270 Sq. feet)
For illustration purposes only - not to scale
www.lpaplus.com

BUTLER & STAG

☎ 020 8504 9000

🏠 184 Queen's Road, Buckhurst Hill, IG9 5BD

✉ buckhursthill@butlerandstag.com

www.butlerandstag.uk

IMPORTANT NOTICE - These particulars have been prepared in good faith and they are not intended to constitute part of an offer or contract. We have not performed a structural survey on this property and the services, appliances and specific fittings have not been tested. All photographs, measurements, floor plans and distances referred to are given as a guide and should not be relied upon.